

- A** :- OFFICE, PRINCIPAL CABIN, CLASS ROOM, SEMINAR HALL AND RECORD ROOM
- B** :- CLASS ROOM, STAFF ROOM & LIBRARY
- C** :- STAFF & LADIES TOILET
- D** :- CANTEEN
- E** :- PARKING FOR STAFF
- F** :- WELL
- G** :- GENTS TOILET
- H** :- INDOOR SPORTS FACILITIES
AUDITORIUM, COMPUTER LAB, N.S.S., N.C.C., NAAC ROOM AND BOY'S CONNON ROOM
- I** :- STUDENTS PARKING

TOTAL PLOT AREA - 4.5 ACERS.
TOTAL BUILT UP AREA - 1536.04 SQM.
 - 16527.79 SQFT.
TOTAL CARPET AREA - 1286.11 SQM.
 - 13838.54 SQFT.

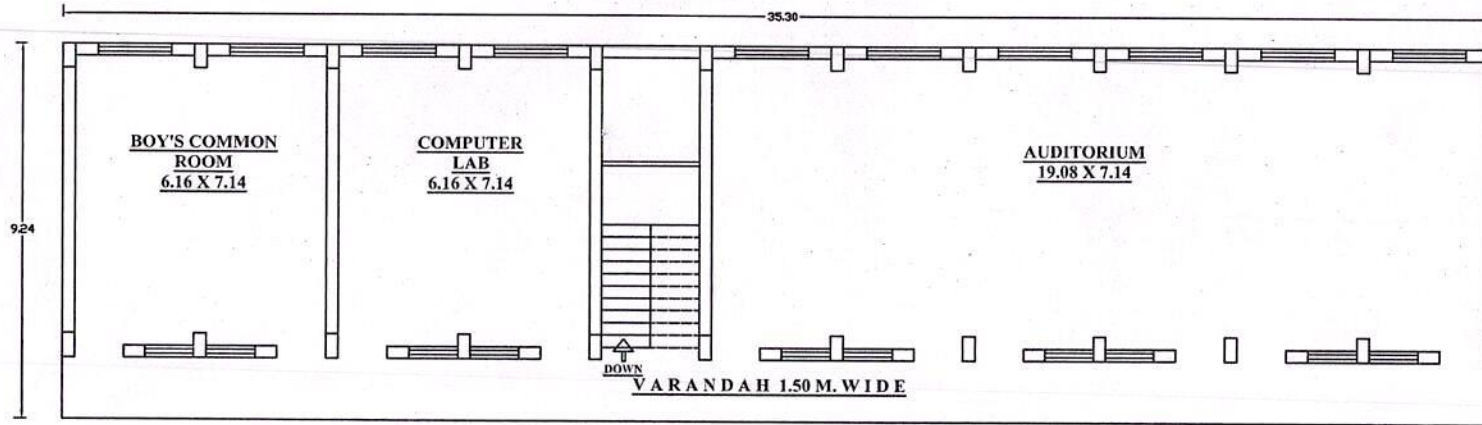
NOT TO SCALE

BLOCK LAYOUT DRAWING FOR PHONDAGHAT EDUCATION SOCIETY'S ARTS & COMMERCE COLLEGE, PHONDAGHAT, AT/POST - PHONDAGHAT, TAL. - KANKAVLI, DIST. - SINDHUDURG

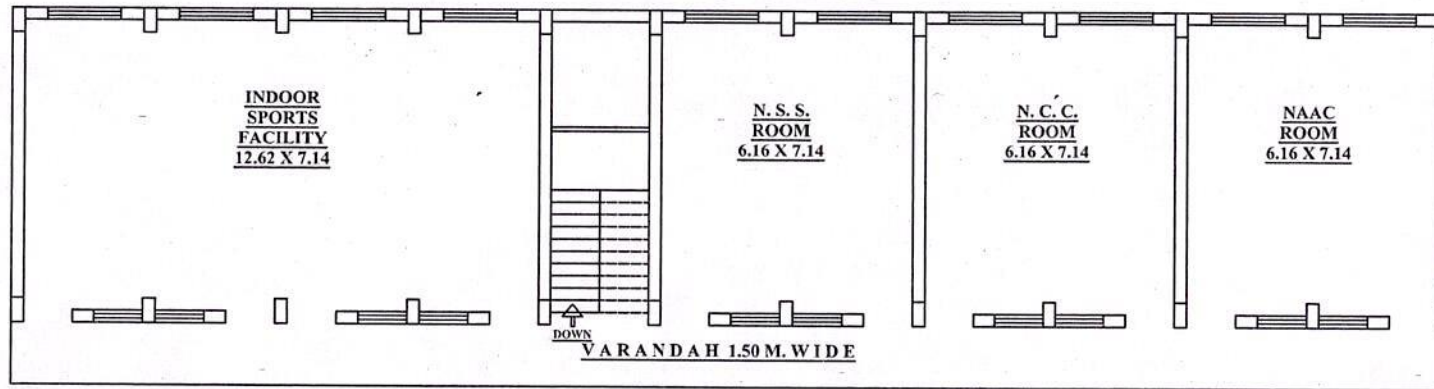
W. Namde
 PRINCIPAL

Arts & Commerce College
 Phondaghat, Tal. Kankavli, Dist. Sindhudurg

PLAN OF BUILDING 'H'



GROUND FLOOR PLAN



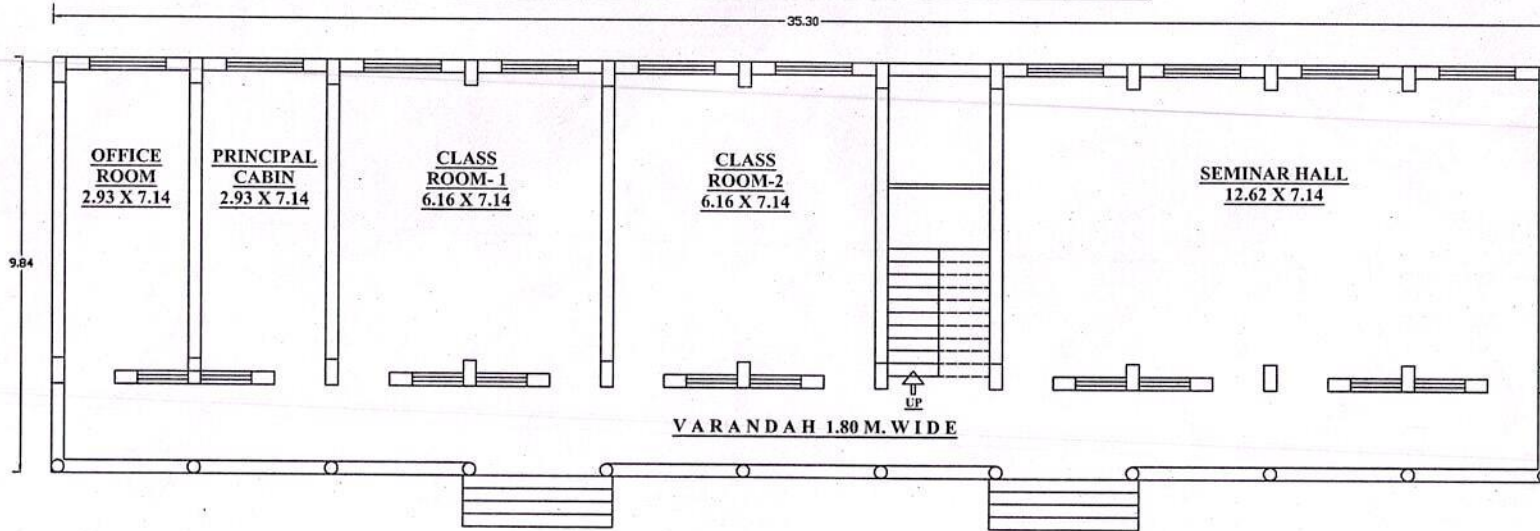
FIRST FLOOR PLAN

NOT TO SCALE

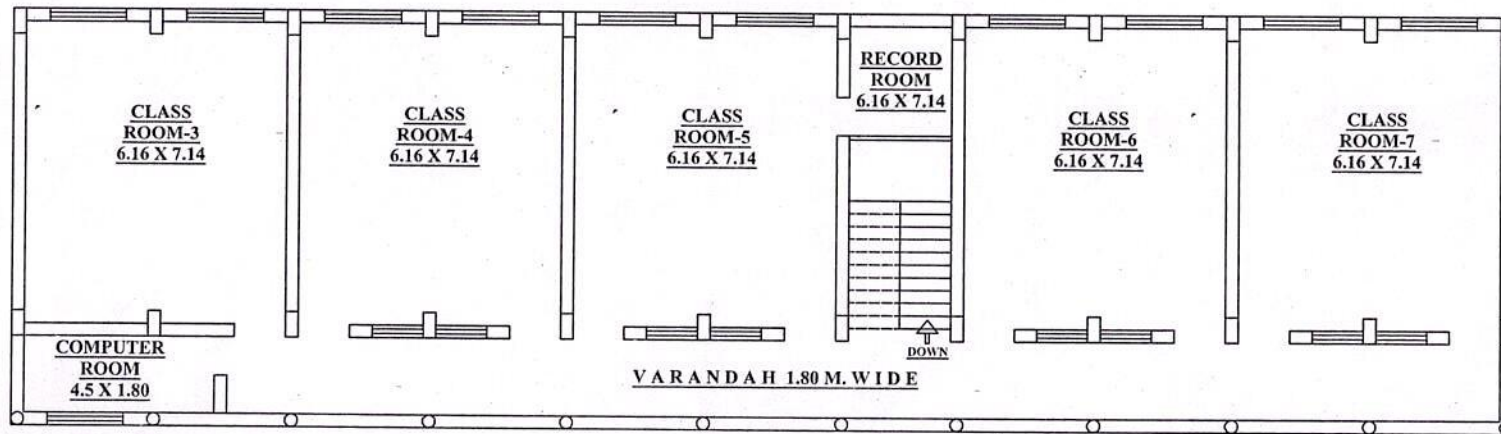
**BUILDING DRAWING FOR PHONDAGHAT
EDUCATION SOCIETY'S ARTS & COMMERCE
COLLEGE, PHONDAGHAT,
AT/POST - PHONDAGHAT, TAL. - KANKAVLI,
DIST. - SINDHUDURG**

[Signature]
PRINCIPAL
Arts & Commerce College
Phondaghat, Tal. Kankavli, Dist. Sindhudurg

PLAN OF BUILDING 'A'



GROUND FLOOR PLAN



FIRST FLOOR PLAN

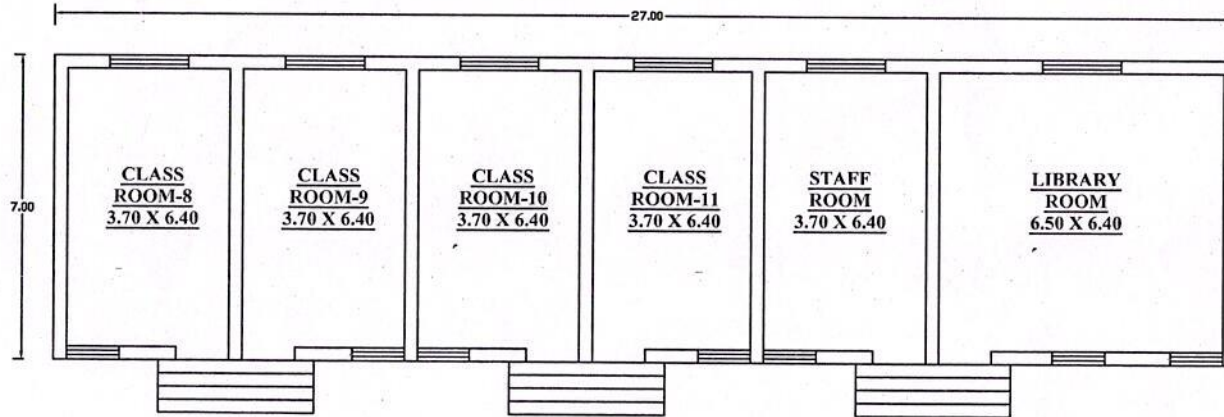
NOT TO SCALE

**BUILDING DRAWING FOR PHONDAGHAT
EDUCATION SOCIETY'S ARTS & COMMERCE
COLLEGE, PHONDAGHAT,
AT/POST - PHONDAGHAT, TAL. - KANKAVLI,
DIST. - SINDHUDURG**

Principal
Principal
Arts & Commerce College
Phondaghat, Tal. Kankavli, Dist. Sindhudurg



PLAN OF BUILDING 'B'



GROUND FLOOR PLAN

NOT TO SCALE

**BLOCK LAYOUT DRAWING FOR PHONDAGHAT
EDUCATION SOCIETY'S ARTS & COMMERCE
COLLEGE, PHONDAGHAT,
AT/POST - PHONDAGHAT, TAL. - KANKAVLI,
DIST. - SINDHUDURG**

[Signature]
PRINCIPAL
Arts & Commerce College
Phondaghat, Tal. Kankavli, Dist. Sindhudurg